



## AS CONSTRUCTED SITE PLAN FOR LOT 15

This plan shows:

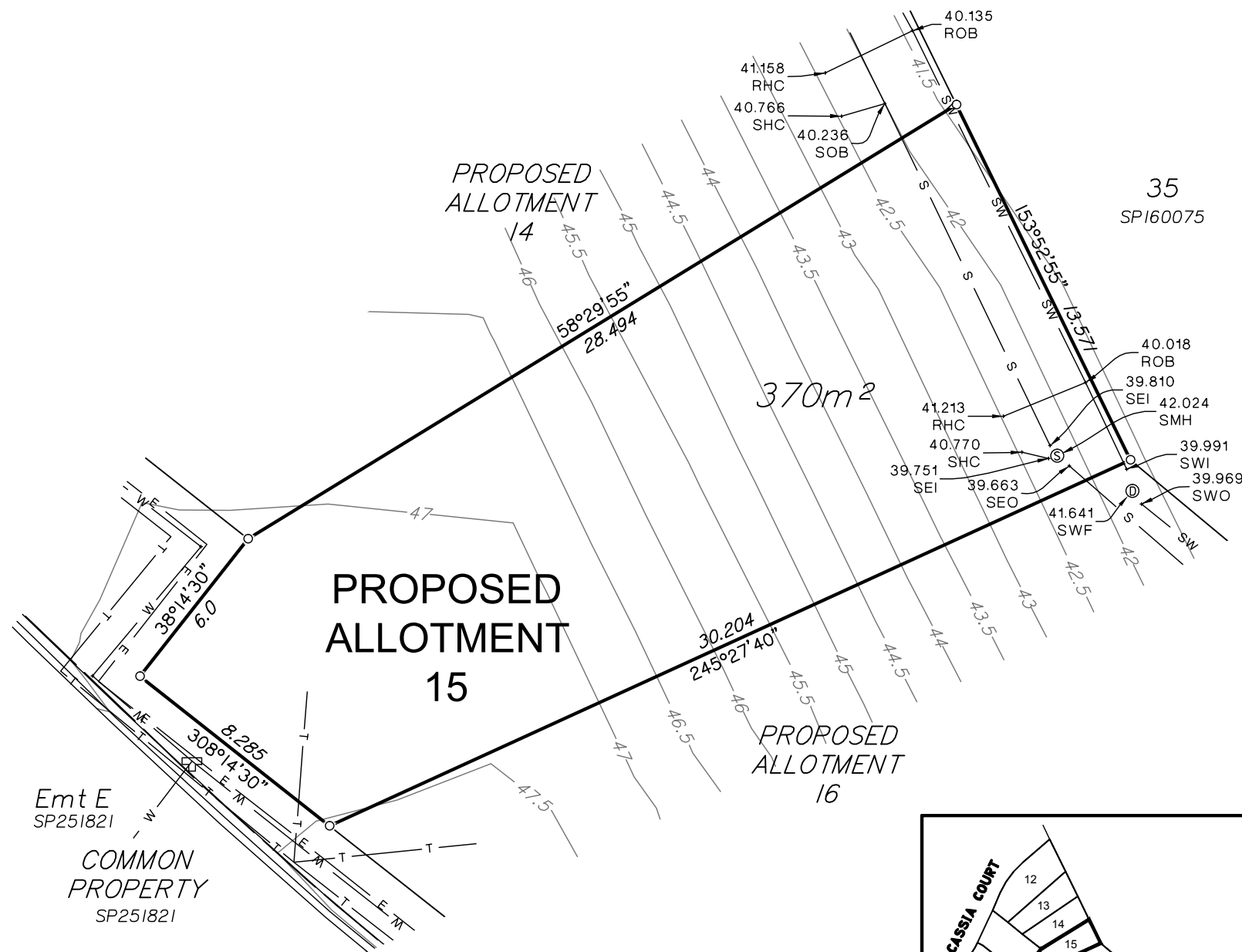
As Constructed Details of Proposed Lot 15 on the Approved Reconfiguration plan WC005782.000-006d dated 10 April 2012.

An Area Development Plan application, being Application Number 6978/05, to reconfigure Lot 24 on SPI60053 at Brookwater was approved by Ipswich City Council subject to conditions.

This plan was prepared for the exclusive use of Twin Ocean Brookwater Pty Ltd and is not to be used for any other purpose or by any other person or corporation. Services shown hereon have been located where possible by field survey. If not able to be so located, services have been plotted from the design drawings provided by the relevant sub consultants and have been noted accordingly on the plan. Where such records do not exist or are inadequate a notation has been made hereon.

Prior to any demolition, excavation or construction on the site, the relevant authority should be contacted for possible location of further underground services and detailed locations of all services.

LandPartners Limited accepts no responsibility for any loss or damage suffered howsoever arising to any person or corporation who may use or rely on this plan in contravention of the terms of this clause. This plan may not be copied unless these notes are included.

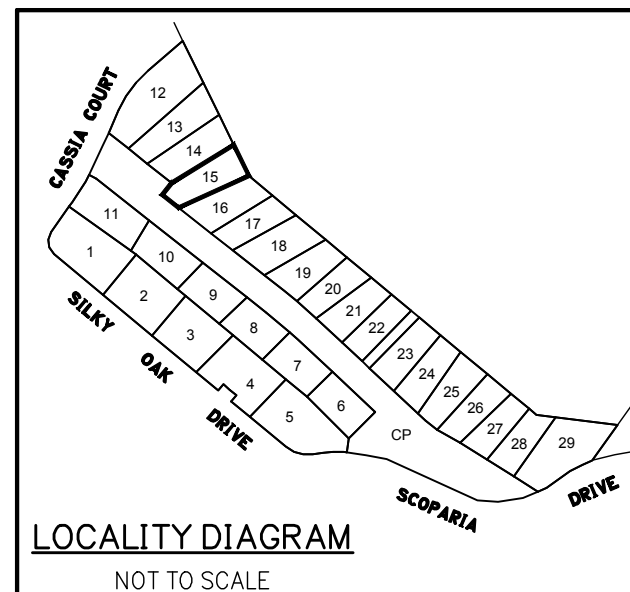


### LEGEND

— 63.5 —	AS CONSTRUCTED CONTOURS	⊙	SWF-DRAINAGE MANHOLE
— SW —	DRAINAGE PIPE	⊞	GTP-GULLY PIT
— S —	SEWERAGE PIPE	+	SWI-DRAINAGE INLET
— W —	WATER PIPE	+	SWO-DRAINAGE OUTLET
— SW — COMP —	DRAINAGE PIPE (DBYD)	+	RHC-DRAINAGE HOUSE CONNECTION
— W — COMP —	WATER PIPE (DBYD)	+	ROB-DRAINAGE OBLIQUE BEND
— E —	ELECTRICAL (DBYD)	⊙	KOT-KERB OUTLET
— T —	COMMUNICATIONS (DBYD)	⊙	SMH-SEWER MANHOLE
⊞	WATER TEE	+	SEI-SEWER INLET
⊞ <sup>SC</sup>	WATER SCOUR VALVE	+	SEO-SEWER OUTLET
⊞	WATER VALVE	+	SHC-SEWER HOUSE CONNECTION
⊞	FIRE HYDRANT	+	SOB-SEWER OBLIQUE BEND



SCALE 1:200 @ A3



Project:  
**SILKY OAK DRIVE  
BROOKWATER**

Client:  
**TWIN OCEAN  
PROPERTY**

DATUM	AHD	
LEVEL ORIGIN	PM154011	RL 46.423
COMPUTER FILE	578200K1	
PDF FILE	578200K1	
ACAD FILE	578200K1	
SCALE	1:200 @ A3	
DRAWN	DPM	DATE 26/03/2015
CHECKED	AW	DATE 26/03/2015
APPROVED	JCB	DATE 26/03/2015
PLAN NUMBER	WC005782.000-061 A	



Western Corridor Office  
Level 6, Springfield Tower  
145 Sinnathamby Boulevard  
Springfield Central QLD 4300  
PO Box 4647  
Springfield QLD 4300

t (07) 3470 8100  
f (07) 3470 8101  
e info@landpartners.com.au  
w www.landpartners.com.au



© LandPartners 2015